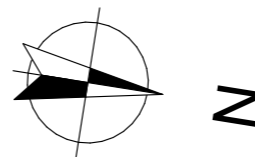


# LES BORÉALES

DE SAINT-PRYVÉ

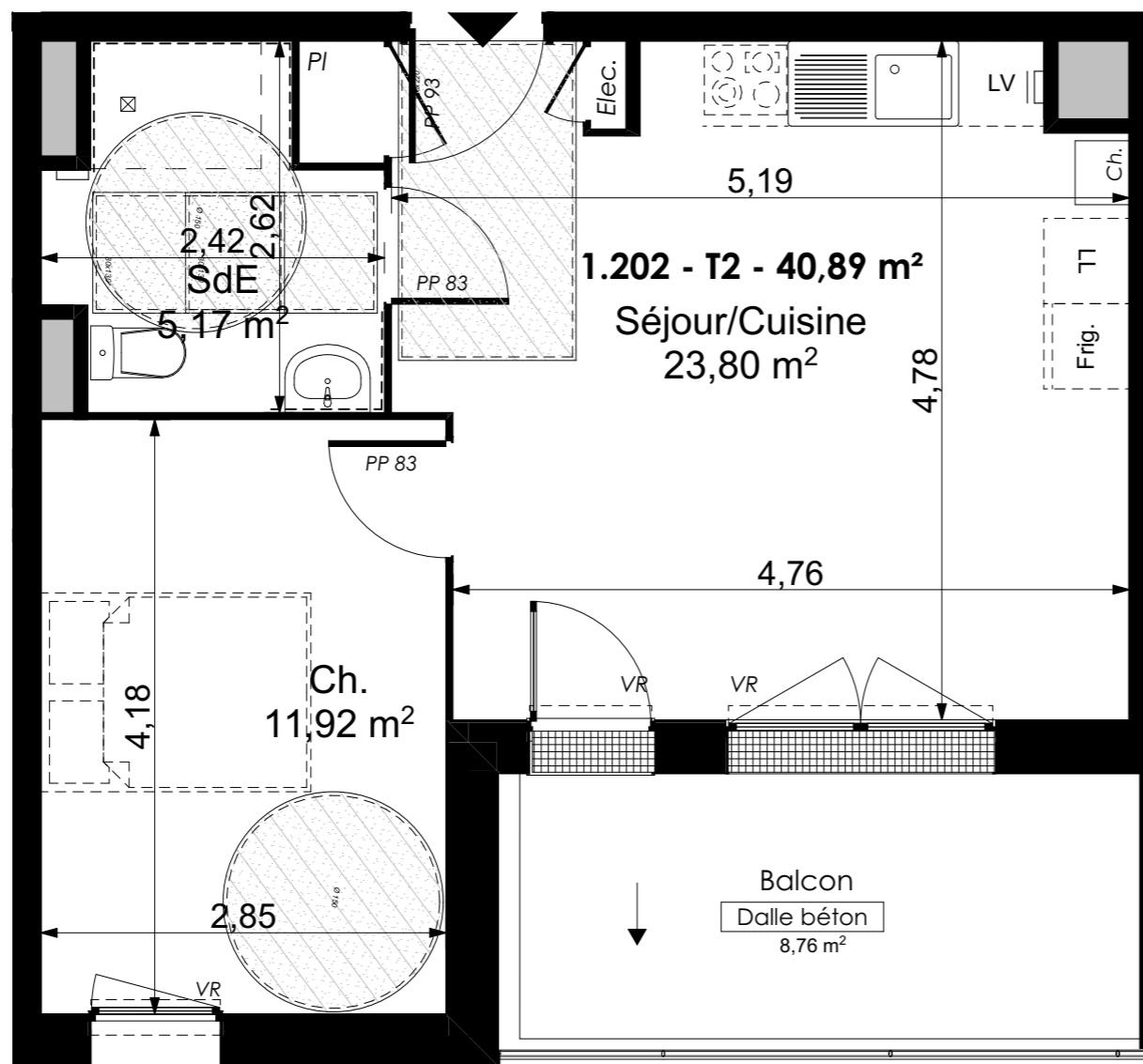


**Valloire Habitat** 

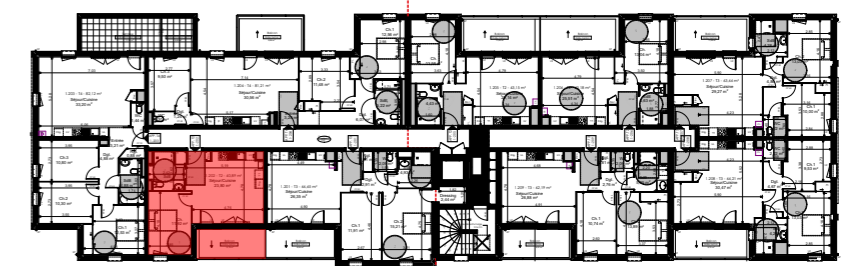
Groupe ActionLogement

28 bis rue du Gros Raisin  
45750 SAINT-PRYVE-SAINT-MESMIN

Les BoRéales de Saint-Pryvé



TYPE T2 - LOGEMENT 1-202 R+2		
Séjour/Cuisine		23,80 m <sup>2</sup>
SdB		5,17 m <sup>2</sup>
Ch. 1		11,92 m <sup>2</sup>
Total surfaces habitables		40,89 m <sup>2</sup>
Annexes		Surf. Utile
<b>Balcon</b>		<b>8,76 m<sup>2</sup></b>
Total surfaces Annexes		8,76 m <sup>2</sup>
	TOTAL SURFACES	49,65 m <sup>2</sup>



15/11/2022	Indice C
Ech : 1:50	
0.00	0.50
1.00	2.00
3.00	